

U ♦ N ♦ I ♦ T ♦ E ♦ D

# Swallow Club

## PRESIDENT'S MESSAGE

by Nate Wayne



Summer 1999

There are several important club items in this bulletin so please read the information very carefully.

The first area is voting to change the constitution and by-laws. There are three issues to vote on and each issue requires 51% of the membership (*not* 51% of those voting) to pass. Consequently, it is important we have a large voter turnout. The four issues are: (1) changing Michigan to the Central District; (2) adopting our new standard; (3) adding additional color classes to our standard; and (4) adopting the new judging program (future changes to this program will be handled by the judging committee).

I have not had comments from members who opposed Michigan moving to the Central District so that, I assume, to be a non-controversial issue. There were comments as it related to wording and the illustrations for the new standard. I personally feel we have done a good job of responding to those concerns. Standards for any breed are not cast in stone and will from time to time need clarification and modification. Voting for acceptance of the standard is not an end in and of itself but part of a process to continue to move the Swallow fancy forward. The previous standard (without illustrations) made it very difficult for the new members to get a sense of what we were trying to do. The last issue of adding additional color classes to our standard has generated several member comments. Hopefully, you have read the recent articles in the bulletin and thought about it. I encourage you to call myself or other club members if you are unclear on this issue. Here again, we need everyone to vote.

You will have cards to vote on for annual meet and judge in this bulletin. Several sites were nominated. Three people were nominated

for judge: Hans Schipper, William Griebel, and Mike Swanson. Mike and Bill have declined to run. Also, we need to nominate officers for the next two years. Once these nominations are received,

I will be contacting individuals to get permission to put them on the ballot. It takes time and effort on everyone's part to have a successful club.

We have some preliminary plans for Des Moines and Milwaukee. At Des Moines, we will have a bird auction. So far, we have commitments: one pr. black white bar fairies from Bill Griebel; one pr. blue black bar either Silesian or clean leg from Bill Griebel, Jr.; one pr. blue white bar fairies from George DeLaNuez; and one pair from Leon Stephens. I will continue to contact other members for donating birds. Again, Elliot Yeske has graciously agreed to act as auctioneer. Just as a reminder, unless otherwise voted, Bill Griebel, will be the judge at Des Moines.

Gary Romig is working on awards for Milwaukee. We plan to have a 50-50 raffle plus there are tentative plans for a club social event on Thursday night. In addition, I have been, and with assistance from others, will be contacting club members to request cash contributions for prize money at Milwaukee. Several members have already pledged contributions: Bob Benson, Cal Bradhoff, Gloria Weisgram, Bill Lawson, Bill Griebel, Mike Swanson, myself, and others. Too often it seems we wait until the last minute at the show and then someone has to take time to ask everyone. My thought was to collect the money now and have it all set before the show. So, if you haven't been contacted and would like to donate, please send me a check at the address listed in this bulletin. Feel free to designate a

continued on next page

particular color or marking; otherwise, it will be generally allocated. I will update you on people donating birds or cash in the next bulletin.

**Remember to vote!**

1. Changing Michigan to Central District;
2. Adopting new USC Standard;
3. Adding additional color classes;
4. Adopting the new judging program.

**FINANCIAL STATEMENT**

Submitted by David Harris, Secretary-Treasurer

Previous Balance 12-13-98		\$ 1098.40
<b>INCOME</b>		
Dues	\$ 250.00	
Bands	206.25	
DesMoines Rebate	82.00	
Faircount Rebate	<u>21.00</u>	<u>559.25</u>
		1,657.65
<b>EXPENSES</b>		
Band Mailers	18.48	
WP Ribbons (Harris)	34.00	
Postage	37.50	
Winter Bulletin	100.00	
Spring Bulletin	86.12	
Patch Refunds	10.00	
NPA (half band order)	180.00	
Clasp Envelopes	6.57	
Photocopies of Standard/By-Laws	<u>28.50</u>	<u>(501.17)</u>
Balance 8-15-99		\$ 1,156.48

*Greetings* from the Central District ... where I can say first hand some mighty nice swallows reside. A midsummer trip by Nate Wayne, Bill Griebel, Bill Lawson and myself leaves no doubt that this show season will be a good one. Upon arrival to the Breadhoff residence, we were treated royally to a steak dinner and on to hours of looking at birds in Cal's lofts with numerous discussions and evaluations. Our last night was spent this way until dark and the fireflies came out as we sat

around the patio listening to stories of Havemeyer, Ruelbach and Hummel. In between we managed to squeeze a trip to Norm House's loft and also were privileged to see the new loft of Bob Jakubatuski. Both live within a half hour or so of Cal's place and the hospitality that was shown to us was first class. A last minute altered route on the way back to Minneapolis put us at the Bensons for Sunday Brunch. Bob showed us his nice crop of young birds and wonderful set up. After dropping off Bill Lawson at the airport, we got a few more hours of pigeoneering in at Nate's place. What a great time we all had – we couldn't have asked for more. Trips like these get everyone geared up for the shows to start and there are plenty of them to go to. Before I talk of shows, I need to thank Nate for organizing the trip to Cal's. He accommodated all of us and as a result we got to see great birds, great people and share a lot of ourselves. Thank you, Nate.

There has been a lot of discussion about the show season. I am not sure of who will be judging at Louisville but I know it will be well attended. This year's Des Moines show will be a Harold Schroedl Memorial Show and will be judged by Bill Griebel. Judging will begin with reds and yellows on Friday evening. A club get together will follow. Our annual bird auction will be held with this show. Some nice pairs have been donated so far.

We are pleased to have the Grand National in the Central District. I am hoping that some of you will volunteer to help Nate and I with the setup of the show area – mainly judging cages. In addition to regular awards, some money has been pledged and to date \$150 for Best Young Swallow any variety and \$150 for Best Young Red or Yellow Swallow is certainly incentive to show your young birds. Some people have paid but you should all try to take care of these pledges ahead of time or at least by Des Moines. We will gladly accept donations for other categories if anyone so desires. Also be sure to reserve your room now at Milwaukee and Des Moines as they are filling up fast.

Lastly, please vote! A lot of members have put time and energy into these issues and your vote is important to the direction this club takes. If you find you need more information on any of this, just call Nate or myself.

Have a good fall. Get those young swallows ready. It won't be long and it will be great to get together again!

~ Gloria

**OFFICIAL ENTRY FORM FOR THE  
MILWAUKEE, WISCONSIN GRAND NATIONAL SHOW  
JANUARY 13, 14, 15, 2000**

*Sponsored by the National Pigeon Association. - Wisconsin State Pigeon Association  
Held at the Milwaukee Auditorium, Milwaukee, Wisconsin*

**ENTRIES ACCEPTED NOV., 1, 1999 - ENTRIES ABSOLUTELY CLOSE DEC. 15th, 1999**

NO.	BREED	COLOR	OC	OR	1st/2nd rank	1st/2nd place	YC	YH	BAND NO.
1.									
2.									
3.									
4.									
5.									
6.									
7.									
8.									
9.									
10.									
11.									
12.									
13.									
14.									
15.									
16.									
17.									
18.									

ENTRY FEE: \$4.00 N.P.A. MEMBERS - \$4.50 NON MEMBERS (EXCEPT KINGS \$4.50 AND \$5.00)

MAKE ALL CHECKS PAYABLE TO: NPA 2000

SEND ALL ENTRIES TO: DAVID WENDT, P.O. BOX 87, VAN DYNE, WI 54979 (920)688-3465  
PROBLEMS OR QUESTIONS - CALL SHOW SUPERINTENDENT KEN WEBER (920)849-4012

Exhibitor \_\_\_\_\_  
Address \_\_\_\_\_  
City \_\_\_\_\_ State \_\_\_\_\_  
Zip \_\_\_\_\_ Phone \_\_\_\_\_  
**AIRLINE INFORMATION**  
Airline \_\_\_\_\_  
Flight # \_\_\_\_\_ Arrival Date \_\_\_\_\_  
Arrival Time \_\_\_\_\_  
Departure Flight # \_\_\_\_\_  
Departure Time \_\_\_\_\_

You can pay your N.P.A. dues with this and take advantage of the \$4.00 entry and \$5.00 catalog. Dues \$15.00 Adult; \$10.00 Juniors; Family \$25.00;  
Dues enclosed \_\_\_\_\_  
Entry Fee; \_\_\_\_\_  
\_\_\_\_\_ Birds @ \_\_\_\_\_ each \_\_\_\_\_  
Banquet: \$30.00 each \_\_\_\_\_  
Marked Catalogs \_\_\_\_\_ @ \_\_\_\_\_  
\$5.00 member -\$10.00 non member \_\_\_\_\_

Total Enclosed \_\_\_\_\_

No	BREED	COLOR	OC	OH	Yr cock	Yr Hen	YC	YH	BAND NO
19									
20									
21									
22									
23									
24									
25									
26									
27									
28									
29									
30									

**\*\*\* JUNIOR COMPETITION\*\*\* (Birds must be entered above)**

BREED	COLOR/MARKING	AGE-SEX (YH,YC,OH,OC)	BAND #
1.			
2.			

**NATIONAL PIGEON ASSOCIATION SHOW RULES  
IMPORTANT PLEASE READ!!!!**

**(IF YOU CANNOT ABIDE BY THESE RULES THEN DO NOT ENTER)**

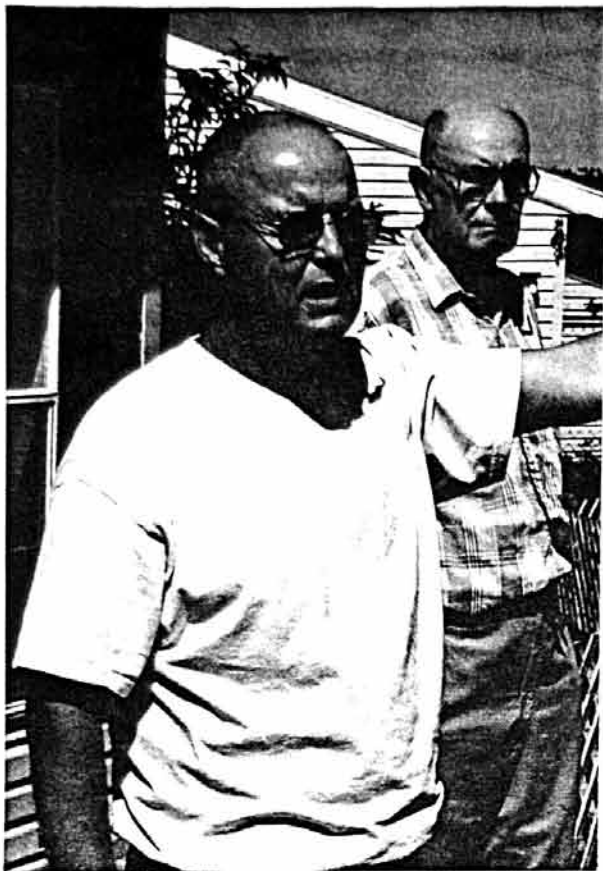
1. Failure to recognize or abide by these show rules will exclude entry.
2. This show recognizes all seamless bands of a reputable banding organization and approved Affiliated Clubs bands.
3. Reliable and competent judges have been selected by the Specialty Clubs and their decisions may be appealed only upon written protest to the Executive Committee of NPA, together with a protest fee of \$25.00, which will be forfeited if the judges decision is sustained. Appeal must be filed within 12 hours after the disputed decision.
4. Each exhibit entered must be the bonafide property of the exhibitor and must be shown in its natural condition. The right is reserved to disqualify all unworthy specimens. Proper trimming and preparation is considered as natural condition.
5. The show management will not be responsible for the loss of birds. However, the best security possible will be given. Clean water and feed daily shall be provided.
6. An NPA Year Book listing exhibitors names, placings to one past half the class and awards will be printed and mailed to all NPA Members exhibiting at the show for \$5.00 and a charge of \$10.00 to all others.
7. All birds will be singly cooped.
8. Substitutions will be permitted only when made in the same class, color, age and sex as the original entry.
9. When a Display Award is given, the Specialty Club shall establish the method of scoring points.
10. The show management reserves the right to reject unhealthy or diseased specimens received for exhibition. If sickness develops, the diseased bird will be removed from the show hall and at the discretion of the management, may be destroyed.
11. The Grand National officially opens on Thursday morning at 10:00 A.M. Birds may be cooped on Wed. Jan. 12, 2000. All birds must be cooped NO LATER THAN 4:00 P.M. THURSDAY AFTERNOON, January 13, 2000. BIRDS MAY BE LOADED IN THEIR BOXES AT 4:00 P.M.. ON SATURDAY AFTERNOON, JANUARY 15, 2000, BIRDS MUST REMAIN IN THE SHOWROOM UNTIL 5:00 P.M. ON SATURDAY AFTERNOON JANUARY 15, 2000.
12. The number of placings in each class shall be determined by the Specialty Club.
13. A Grand National Championship Certificate will be awarded to each breed exhibited where two or more exhibitors are showing.
14. Specialty Clubs shall establish their own classes, Where no club agreement is in effect, classes shall be provided for Young Hen, Young Cock, Old Hen and Old Cock.
15. No birds shall be allowed in the show room on which the entry fee has not been paid. Entered birds may be sold but must remain until all birds are released. Please do not set up bird sale areas in parking lot.
16. All carrying cases will be removed from the show room during the show. NO BOXES ARE TO BE ALLOWED UNDER OR AROUND THE COOPING DURING THE SHOW.
17. A violation of these rules will result in a partial or total loss of rebate to the Specialty Club involved and under contract for this show. A consideration of the loss of exhibiting privileges may also be considered by the NPA Board. The Board's decision in these matters is final



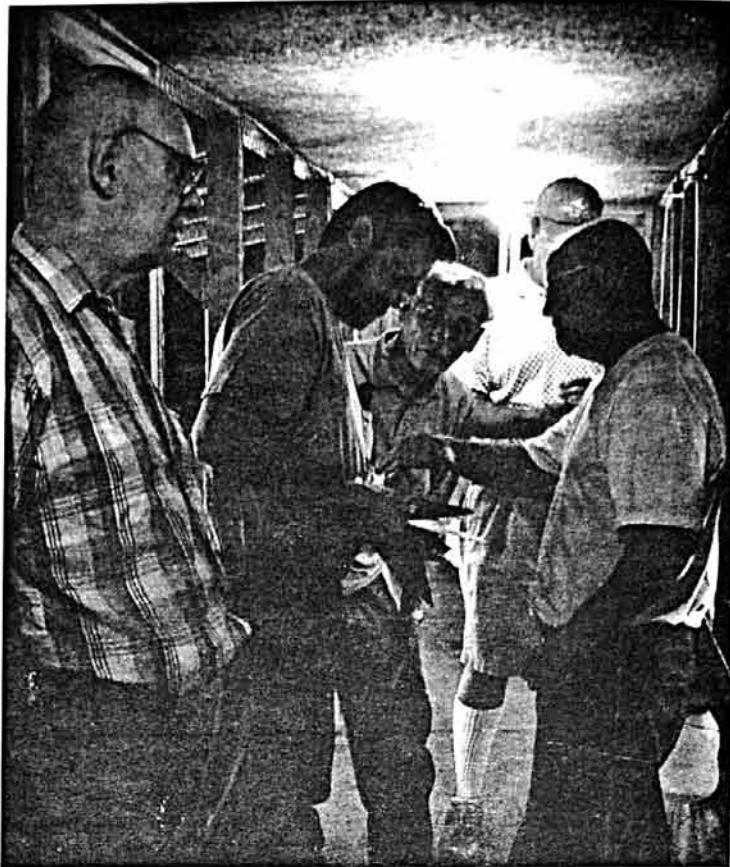
Our get-together on Cal's patio.



In Cal's backyard, looking at reds and yellows.



Norm House and Cal Breadhoff on Norm's deck.



Evaluating birds in Norm House's Loft.

## Calendar of Pigeon Shows

OCTOBER 16

Western Young Bird Show, Portland, OR.  
Sponsored by the Northwest Pigeon Fanciers.  
Contact Eugene Nollan (253) 472-5103.  
USC contact person: Alex Lacy

OCTOBER 23

National Young Bird Show, Louisville, KY. If you did not show in 1998, you must write for an entry blank. NYBS, P.O. Box 21, Milton, KY 40045.  
USC contact person: Nate Wayne, (612) 545-7313

NOVEMBER 18, 19, 20

Pageant of Pigeons. George DeLaNuez, Show Secretary and USC contact person, P.O. Box 90251, San Bernardino, CA 92427.  
(909) 880-8485

DECEMBER 3, 4

74th ISPA All-Breed Show, Des Moines, IA.  
Howard Hart, Show Secretary, P.O. Box 34,  
Lanesboro, IA 51451. (712) 656-2253  
USC contact person: Gloria Weisgram  
(218) 236-8493

JANUARY 13, 14, 15

NPA Grand National, Milwaukee, WI. Entries to David Wendt, P.O. Box 87, Van Dyne, WI 54979.  
(920) 688-3465. USC contact person: Gloria Weisgram (218) 236-8493 or Nate Wayne, (612) 545-7313

*Don't Delay ...  
Make your plans now to  
attend your favorite shows!*